



ISABELLA DAM SAFETY MODIFICATION PROJECT SITUATION REPORT



U.S. Army Corps
of Engineers
Sacramento District

Highlights (last 30 days)

- **U.S. Forest Service Relocations:** The U.S. Army Corps of Engineers Sacramento District received approval to use Isabella Dam Safety Modification Project funds to relocate the U.S. Forest Service (USFS) facilities impacted by the project's construction. The Corps recognizes the importance of these facilities to the residents and economy of the lake communities, and is making every effort possible to offset these impacts. This includes:
 - ◆ Permanent replacement of the USFS buildings on Ponderosa Drive (the visitor center, fire station, and out-buildings) which require demolition because they are located in the area of the new emergency spillway. The location of these replacement buildings is currently undergoing engineering and environmental analyses by the USFS and Corps. The possible new USFS building locations (and also Corps buildings) will be presented to the general public for review and comment in 2014 as part of the Environmental Assessment process, which will result in the determination of preferred locations by December 2014.
 - ◆ Construction of new, and/or modification of existing, recreation facilities to offset the effects of the temporary closure of several existing recreation facilities required for the duration of construction. Temporary closure is required for Boat Launch 19, Engineer's Point, the Auxiliary Dam Recreation Area, and the Main Dam Campground. The strategy for offsetting these temporary impacts to recreation will be presented to the general public for review and comment in 2014 as part of the Environmental Assessment process, which will result in the determination of preferred locations and facilities by December 2014.

Looking Ahead (next 30 days)

- Site visits and meetings with property owners conducted by Corps personnel, and the establishment of a site office at the Lakeside Village Trailer Park for relocation assistance to trailer park owners.
- Detailed planning and design collaboration between the Corps and Caltrans, to determine the final configurations and layouts for the relocation of State Highway 178 and modifications to that section of State Highway 155 adjacent to the raised Main Dam.

Current Lake Status (5 May)

- The current pool resides at 68,318 acre-ft, and elevation of 2538.04 feet (IPD) or 2541.80 (NAVD 88) which is 19% of the restricted pool. As part of our interim risk reduction measures, Isabella Lake has a restricted elevation of 2585.5 feet (361,250 acre-ft). Current Lake Status can be viewed at <http://130.165.21.224/fcgi-bin/hourly.py?report=isb>

May 2014

UPCOMING MILESTONES

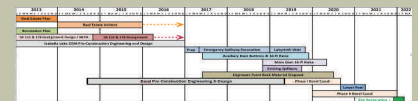
*Pre-Construction, Engineering
and Design*
2013 - 2016

*Tiered NEPA Documents,
Highway 178 Relocation FONSI
(Finding of No Significant Impact):*
July 2014

*Begin Highway 178 Relocation
Construction*
Summer 2015

*Dam & Spillway
Construction*
2017—2020

Project Schedule



**All Dates Subject to Change—click on link
above for current schedule and infographic*

Project Web page:

[http://www.spk.usace.army.mil/
Missions/CivilWorks/
IsabellaDam.aspx](http://www.spk.usace.army.mil/Missions/CivilWorks/IsabellaDam.aspx)

Sacramento District Homepage:

www.spk.usace.army.mil

Phone:

916-557-5100

E-mail:

Isabella@usace.army.mil

Follow us on:

